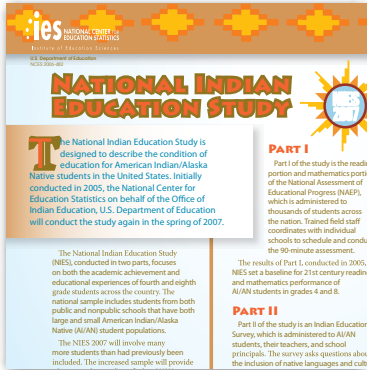




Expert Methods For Your  Evaluation Needs

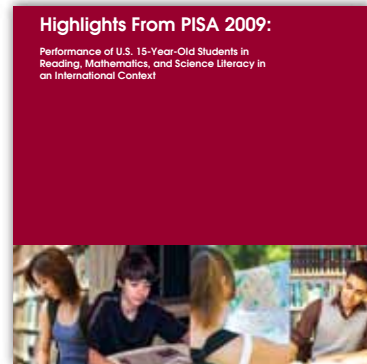
Windwalker Corporation's capabilities in evaluation methodology provide clients with state-of-the-art design, data collection, and analysis expertise to assess the efficiency and effectiveness of their programs and services. Our evaluation services range from research design and development of data collection instruments to the preparation of reports targeted to both professional and general audiences.

Windwalker Corporation designs and carries out evaluation studies in a wide variety of areas, including education, training, social services, and management.



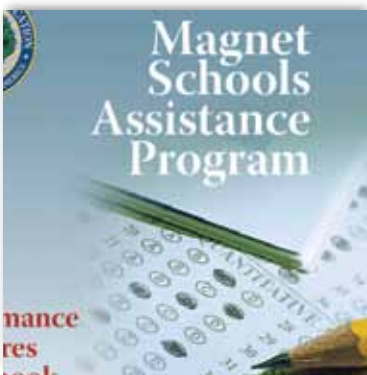
Student Assessment

We have extensive experience in the recruitment of school districts and schools to participate in national student assessment studies. These studies include the Program for International Student Assessment (PISA), National Assessment of Educational Progress (NAEP), the National Indian Education Study, the Trends in International Mathematics and Science Study (TIMSS), and the Early Childhood Longitudinal Study – Kindergarten Cohort (ECLS-K). We have developed training plans and materials and delivered training to field staff to help them recruit districts and schools to participate in national data collection efforts.



Educational Program Evaluation

For the U.S. Department of Education's Magnet Schools Program, we conducted extensive analyses of grantee-reported data relating to student academic achievement and minority group isolation. We also provided technical assistance to the magnet school program grantees in rigorous evaluation techniques. This included assistance in experimental design, development of data collection instruments, sampling, random assignment to treatment and control groups, data collection, and data analysis and reporting.



Training Evaluation

We have planned and conducted comprehensive evaluations of management training programs for federal government agency managers and supervisors. These evaluations included development of data collection instruments, design of data collection plans, development of data analysis plans, analyses of the data, and preparation of high quality evaluation reports. An example of this work has been our evaluation of the U.S. Geological Survey's (USGS) Supervisory and Management Development Program. For this evaluation, Windwalker developed pre- and post-surveys of program participants, and their supervisors, co-workers, and staff.

